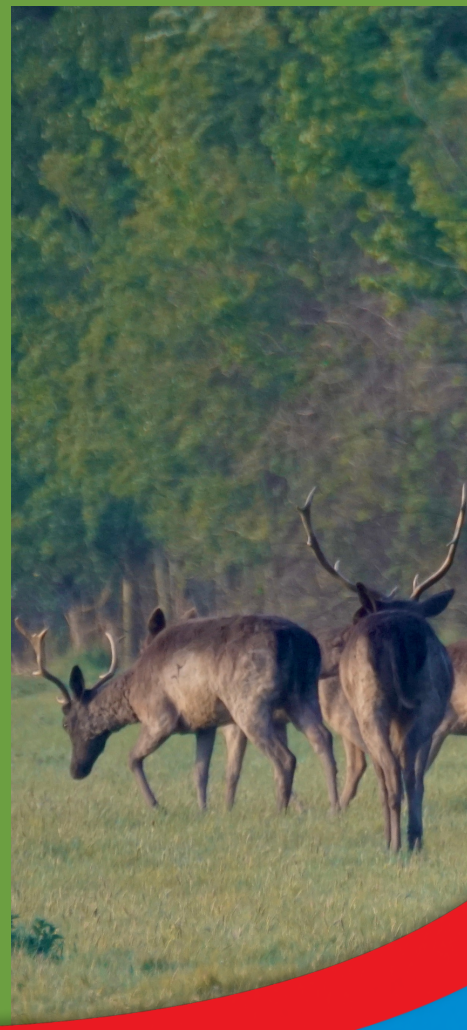


Ufton's Environment and Sustainability Charter



<p>Historic and Other Buildings</p> <ul style="list-style-type: none"> ❖ Our Grade 1 Tudor Manor House is maintained in keeping with its listing ❖ All other buildings are maintained in keeping with structure and age ❖ Trained staff or specialist contractors employed to complete work. 	<p>Ufton's Environmental Value Statement</p> <p>We conserve our natural and heritage landscape to ensure its long term sustainability</p> <p>A Greener Ufton initiative introduced in 2018 to increase staff awareness and encourage ideas to reduce our environmental impact</p> <p>All RAMS documents contain an estimate of environmental risk and how this is mitigated</p>	<p>Wider environment</p> <ul style="list-style-type: none"> ❖ Chemicals with least environmental impact preferred where possible ❖ Staff trained in correct use ❖ Chemicals stored securely in bunded cabinets ❖ Fuels stored securely and bunded ❖ Policy of Leave no trace throughout our work ❖ Water quality tests are performed as required
<p>Woodland and Grounds</p> <ul style="list-style-type: none"> ❖ Woodland and grounds actively and sympathetically managed to conserve habitats and encourage native species ❖ An enclosed Conservation Area has been created at the centre of the site. No access to this area is given to staff or visitors with the intention of maintaining an undisturbed habitat. ❖ Regeneration of woodland, old orchard and arboretum actively encouraged where various diseases have depleted trees; plan of re-planting of indigenous species in place ❖ Small felled timber left in-situ to rot and provide habitats ❖ COSHH products with minimal impact selected for use on grounds ❖ Areas of grass along hedges and fences uncut to provide corridor and habitat ❖ Annual woodland inspection to ensure health and wellbeing of trees. ❖ Pathways created to limit woodland disturbance 	<p>Natural resources</p> <ul style="list-style-type: none"> ❖ Rain water collected in water butts from woodland cabins ❖ Use of on-site resources wherever possible ❖ Items adapted or re-purposed where-ever possible ❖ Repair is always first response before replacement ❖ Herbs and vegetables grown by Kitchen Cabin are used for school meals when-ever possible ❖ Composting of grounds and vegetable waste ❖ Ufton staff promote good environment care and practice when-ever possible 	<p>Habitats and Species</p> <ul style="list-style-type: none"> ❖ Habitats managed to encourage wildlife ❖ Re-introduction of appropriate species as needed ❖ Part of Bat Conservation, 8 species left undisturbed ❖ Solitary bees left undisturbed ❖ Bug Hotel and wood piles ❖ Environmental programmes and resources available (John Muir Award available) ❖ Opportunity for be-spoke environmental programmes ❖ Use of environment and resources embedded into Historic programmes ❖ Herb garden labelled with past and present uses
<p>Purchasing</p> <ul style="list-style-type: none"> ❖ Materials produced on site used where possible ❖ Origin of materials and products checked where possible; sustainable products preferred ❖ Local resources purchased where possible ❖ Energy efficient resources purchased as replacements needed ❖ Electricity supplier sources power from 100% renewable energy 	<p>Waste management</p> <ul style="list-style-type: none"> ❖ Waste disposed of in line with Council and legal requirements ❖ Recycling of paper, card, plastic, glass, crisp packets, laminated sheets, metal cans ❖ Reduction in photocopying ❖ Reduction in use of single-use plastic 	<p>Climate change</p> <ul style="list-style-type: none"> ❖ Heating is thermostatically controlled and on timers ❖ Woodland cabins have solar panels and energy use monitors ❖ Local suppliers and contractors used wherever possible ❖ Handheld grounds machinery replaced with battery powered machinery ❖ Respond to new initiatives wherever possible